



# **WHEELS & ACCESSORIES** **CATALOGUE**

CURRENT AS OF FEBRUARY 2024





# TABLE OF CONTENTS

## **1 WEIGHT CHEETAH ALLOY WHEELS**

---

**2** 16 x 5.5 / 17.5 x 6.0

---

**3** 17.5 x 6.75 / 19.5 x 6.75

---

**4** 19.5 x 7.5

---

**5** 19.5 x 8.25 / 22.5 x 7.5

---

**6** 22.5 x 8.25

---

**7** 22.5 x 9.0 / 22.5 x 9.0 Mesh Alloy

---

**8** 22.5 x 11.75 / 22.5 x 12.25

## **9 MTW STEEL WHEELS**

---

**10** 17.5 x 6.0 / 17.5 x 6.75

---

**11** 19.5 x 6.75 / 19.5 x 7.5

---

**12** 19.5 x 14 / 22.5 x 7.5

---

**13** 22.5 x 8.25 / 22.5 x 9.0

---

**14** 22.5 x 11.75

## **15 OTHER**

---

**16** MTW Steel & Chrome Rims

---

**17** Spacer Bands

---

**18** Valves, Extensions & O-rings

---

**19** Sleeve Nuts

# WEIGHT CHEETAH

## THE LIGHTEST & STRONGEST WHEELS IN THE INDUSTRY

Weight Cheetah aluminium wheels are forged from a single piece of high grade 6061 aluminium from Dubai. NADCAP-certified heat-treatment strengthens the aluminium at an aerospace level. This forged method is meticulously examined throughout the manufacturing process, surpassing the most stringent and demanding tests, to produce a strong and durable OEM level quality product. The advantages of Weight Cheetah Wheels include;

- Brilliant look and a lasting shine
- Half the weight of steel rims
- Extended brake and tyre life
- Low maintenance
- One piece forged strength
- Increase fuel economy
- Corrosion resistance
- 5 year limited warranty

### WEIGHT CHEETAH ALLOY WHEELS FINISHES

Available in machined, polished and premium surface. Alloy Weight Cheetah Wheels are available in sizes of 16, 17.5, 19.5 & 22.5 inches. Weight Cheetah Premium Finish Wheels have a unique treatment that won't crack or peel, allowing the wheels to keep their shine for years on the road.



**MACHINE**

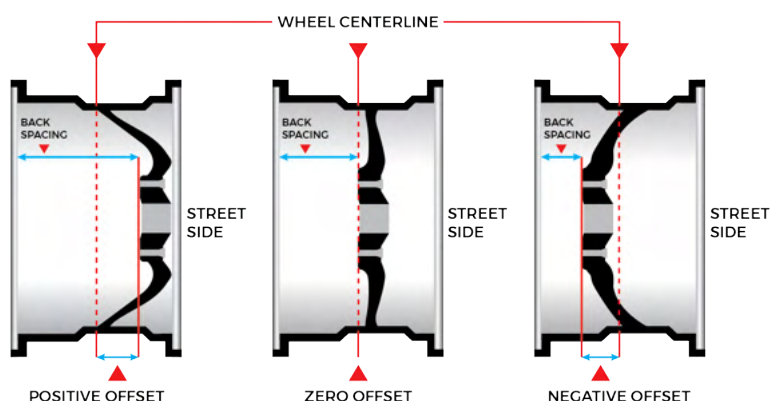


**POLISHED**



**PREMIUM**

### HOW TO MEASURE OFFSET & PCD





# WEIGHT CHEETAH ALLOY WHEELS



**16 X 5.5 WEIGHT CHEETAH ALLOY WHEELS** (in order from left to right, as above).

PART NO.	LOAD CAPACITY (KG)	WHEEL WEIGHT (KG)	STUDS	STUD HOLE (MM)	PCD (MM)	FINISH	CENTRE BORE (MM)	OFFSET
<b>550263</b>	1699kg	8.9kg	5	32mm J-Budd	208mm	Machine	150mm	102 Inset
<b>550264</b>	1600kg	8.9kg	5	32mm J-Budd	208mm	Polished	150mm	102 Inset
<b>550266</b>	1135kg	8.9kg	5	32mm J-Budd	208mm	Machine	150mm	102 Inset
<b>550262P</b>	1135kg	8.9kg	5	32mm J-Budd	203mm	Machine	146mm	102 Inset



**17.5 X 6.0 WEIGHT CHEETAH ALLOY WHEELS** (in order from left to right, as above).

PART NO.	LOAD CAPACITY (KG)	WHEEL WEIGHT (KG)	STUDS	STUD HOLE (MM)	PCD (MM)	FINISH	CENTRE BORE (MM)	OFFSET
<b>550310P</b>	2500kg	13kg	6	32mm J-Budd	222.25mm	Machine	164mm	116.5 Inset
<b>550311P</b>	2500kg	13.6kg	6	32mm	222.25mm	Polished Both Sides	164mm	116.5 Inset
<b>550252P</b>	2500kg	12.8kg	10	24mm	225mm	Machine	176mm	112.5 Inset
<b>550267</b>	2500kg	12.8kg	10	24mm	225mm	Machine	176mm	116.5 Inset
<b>550260P</b>	2500kg	12.8kg	10	24mm	225mm	Polished Both Sides	176mm	112.5 Inset
<b>555000PN</b>	2500kg	12.9kg	10	24mm	225mm	Premium	176mm	112.5 Inset



**17.5 X 6.75 WEIGHT CHEETAH ALLOY WHEELS** (in order from left to right, as above).

PART NO.	LOAD CAPACITY (KG)	WHEEL WEIGHT (KG)	STUDS	STUD HOLE (MM)	PCD (MM)	FINISH	CENTRE BORE (MM)	OFFSET
<b>550315P</b>	2300kg	14.3kg	6	32mm J-Budd	225.25mm	Polished Both Sides	164mm	120 Inset
<b>550193P</b>	2500kg	13.2kg	8	24mm	275mm	Polished Both Sides	221mm	120 Inset
<b>550193PN</b>	2500kg	13.2kg	8	24mm	275mm	Premium	221mm	120 Inset
<b>550261P</b>	2300kg	12.8kg	10	24mm	225mm	Polished	176mm	120 Inset
<b>550265P</b>	2300kg	12.8kg	10	24mm	225mm	Machine	176mm	120 Inset
<b>555001PN</b>	2300kg	12.8kg	10	24mm	225mm	Premium		



**19.5 X 6.75 WEIGHT CHEETAH ALLOY WHEELS** (in order from left to right, as above).

PART NO.	LOAD CAPACITY (KG)	WHEEL WEIGHT (KG)	STUDS	STUD HOLE (MM)	PCD (MM)	FINISH	CENTRE BORE (MM)	OFFSET
<b>550289</b>	2500kg	17kg	8	32mm	285mm	Polished Both Sides	221mm	123 Inset
<b>550309P</b>	2500kg	19kg	8	32mm	275mm	Machine	221mm	128 Inset



**19.5 X 7.5 WEIGHT CHEETAH ALLOY WHEELS** (in order from left to right, as above).

PART NO.	LOAD CAPACITY (KG)	WHEEL WEIGHT (KG)	STUDS	STUD HOLE (MM)	PCD (MM)	FINISH	CENTRE BORE (MM)	OFFSET
<b>550285P</b>	3000kg	17.8kg	8	32mm	275mm	Machine	221mm	134 Inset
<b>550176P</b>	3000kg	18kg	8	24mm	275mm	Machine	221mm	134 Inset
<b>550295</b>	3000kg	17.8kg	10	24mm	225mm	Machine	176mm	134 Inset
<b>550298P</b>	3000kg	17.8kg	10	24mm	285mm	Machine	220mm	134 Inset
<b>550286P</b>	3000kg	17.8kg	8	32mm	275mm	Polished	221mm	134 Inset
<b>550177P</b>	3000kg	18.1kg	8	24mm	275mm	Polished Both Sides	221mm	134 Inset
<b>550300</b>	3000kg	17.8kg	8	32mm	275mm	Polished Both Sides	221mm	134 Inset
<b>555005PN</b>	3000kg	18kg	8	24mm	275mm	Premium	221mm	134 Inset
<b>555010PN</b>	3000kg	18kg	8	32mm	275mm	Premium	221mm	134 Inset



**19.5 X 8.25 WEIGHT CHEETAH ALLOY WHEELS** (in order from left to right, as above).

PART NO.	LOAD CAPACITY (KG)	WHEEL WEIGHT (KG)	STUDS	STUD HOLE (MM)	PCD (MM)	FINISH	CENTRE BORE (MM)	OFFSET
550305	3150kg	18.5kg	8	32mm	275mm	Machine	221mm	146 Inset




**22.5 X 8.25 WEIGHT CHEETAH ALLOY WHEELS** (in order from left to right, as above).

PART NO.	LOAD CAPACITY (KG)	WHEEL WEIGHT (KG)	STUDS	STUD HOLE (MM)	PCD (MM)	FINISH	CENTRE BORE (MM)	OFFSET
<b>550287P</b>	3650kg	24.5kg	8	32mm J-Budd	285mm	Machine	221mm	144 Inset
<b>550290P</b>	3650kg	25kg	10	24mm	285mm	Machine	220mm	144 Inset
<b>550284P</b>	3550kg	24kg	10	24mm	335mm	Machine	281mm	144 Inset
<b>550291P</b>	3650kg	24kg	10	24mm	285mm	Polished Both Sides	220mm	144 Inset
<b>550288P</b>	3350kg	25.7kg	10	24mm	335mm	Polished Both Sides	281mm	144 Inset
<b>555030PN</b>	3650kg	24.5kg	10	24mm	285mm	Premium	220mm	144 Inset
<b>555020</b>	4000kg	25kg	10	24mm	335mm	Premium	281mm	144 Inset
<b>555025PN</b>	4000kg	25kg	10	32mm	335mm	Premium	281mm	144 Inset
<b>550280P</b>	3550kg	24kg	10	32mm	335mm	Machine	281mm	144 Inset
<b>550281P</b>	3550kg	24kg	10	32mm	335mm	Polished Both Sides	281mm	144 Inset
<b>550282</b>	3550kg	24kg	10	32mm	335mm	Outer Pol	281mm	144 Inset



### 22.5 X 9.0 WEIGHT CHEETAH ALLOY WHEELS (in order from left to right, as above).

PART NO.	LOAD CAPACITY (KG)	WHEEL WEIGHT (KG)	STUDS	STUD HOLE (MM)	PCD (MM)	FINISH	CENTRE BORE (MM)	OFFSET
<b>550294P</b>	4000kg	26kg	10	24mm	335mm	Polished	281mm	151.5 Inset
<b>550293</b>	4000kg	27kg	10	24mm	285mm	Machine	220mm	152 Inset
<b>559500P</b>	4125kg	27kg	10	32mm	335mm	Polished	281.1mm	152 Inset



### 22.5 X 9.0 WEIGHT CHEETAH ALLOY WHEELS - FRONT FACE OFFSET

(in order from left to right, as above).

PART NO.	LOAD CAPACITY (KG)	WHEEL WEIGHT (KG)	STUDS	STUD HOLE (MM)	PCD (MM)	FINISH	CENTRE BORE (MM)	OFFSET
<b>550009P</b>	5000kg	26.5kg	10	26mm	285mm	Polished	220mm	106 Inset
<b>550009PN</b>	5000kg	26.5kg	10	26mm	285mm	Premium	220mm	106 Inset
<b>550008P</b>	5000kg	25kg	10	32mm Retro	335mm	Polished	280mm	79 Inset
<b>550008PN</b>	5000kg	25kg	10	32mm Retro	335mm	Premium	280mm	79 Inset



**22.5 X 11.75 WEIGHT CHEETAH ALLOY WHEELS** (in order from left to right, as above).

PART NO.	LOAD CAPACITY (KG)	WHEEL WEIGHT (KG)	STUDS	STUD HOLE (MM)	PCD (MM)	FINISH	CENTRE BORE (MM)	OFFSET
550276P	4500kg	28kg	10	24mm	335mm	Polished	281mm	120 Inset
550275P	4500kg	25.6kg	10	24mm	335mm	Machine	281mm	120 Inset
550270	4500kg	25.6kg	10	26mm	335mm	Machine	281mm	Zero
550271P	4500kg	25.6kg	10	26mm	335mm	Polished	281mm	Zero
550278P	4500kg	25.4kg	10	32mm Retro	335mm	Polished	281mm	120 Inset
550278PN	4500kg	25.4kg	10	32mm	335mm	Premium	281mm	120 Inset
550279	4500kg	25.4kg	10	32mm	335mm	Machine	281mm	120 Inset



**22.5 X 12.25 WEIGHT CHEETAH ALLOY WHEELS** (in order from left to right, as above).

PART NO.	LOAD CAPACITY (KG)	WHEEL WEIGHT (KG)	STUDS	STUD HOLE (MM)	PCD (MM)	FINISH	CENTRE BORE (MM)	OFFSET
550273	5170kg	30.2kg	10	24mm	285mm	Polished	221mm	70 Inset

MTW STEEL WHEELS

## INDUSTRY STANDARD



### INDUSTRY STANDARD STEEL WHEELS

MTW has set the industry standard for steel wheel quality, Our Wheels are made of high-grade steel that will last. Made tough, these wheels have a longer lasting life and can survive in harsh conditions. The wheels come in sizes of 17.5, 19.5 & 22.5. Also available are Heavy Duty Steel Wheels, Demountable rims & Spacer Bands.



# MTW STEEL WHEELS



**17.5 X 6.0 MTW STEEL WHEELS** (in order from left to right, as above).

PART NO.	LOAD CAPACITY (KG)	WHEEL WEIGHT (KG)	STUDS	STUD HOLE (MM)	PCD (MM)	FINISH	CENTRE BORE (MM)	OFFSET
550045	1850kg	26kg	6	18mm	205mm	Painted	161mm	Zero
550314	2725kg	25.4kg	6	32mm	222.25mm	Painted	164mm	135mm
550043	2725kg	24kg	10	26mm	225mm	Painted	176mm	112.5mm
550444	2725kg	25kg	10	26mm	225mm	Chrome	176mm	112.5mm



**17.5 X 6.75 MTW STEEL WHEELS** (in order from left to right, as above).

PART NO.	LOAD CAPACITY (KG)	WHEEL WEIGHT (KG)	STUDS	STUD HOLE (MM)	PCD (MM)	FINISH	CENTRE BORE (MM)	OFFSET
550316-OGREEN	2725kg	25kg	6	32mm J-Budd	222.25mm	Painted	164mm	135 Inset
550445	3150kg	25kg	10	24mm	225mm	Chrome	176mm	135 Inset
550042	2725kg	25.8kg	10	26mm	225mm	Painted	176mm	145 Inset





### 19.5 X 6.75 MTW STEEL WHEELS (in order from left to right, as above).

PART NO.	LOAD CAPACITY (KG)	WHEEL WEIGHT (KG)	STUDS	STUD HOLE (MM)	PCD (MM)	FINISH	CENTRE BORE (MM)	OFFSET
550158	2500kg	32kg	6	32mm J-Budd	222.22mm	Painted	164mm	152mm
550171	2500kg	28kg	8	32mm J-Budd	285mm	Painted	221mm	147mm



### 19.5 X 7.5 MTW STEEL WHEELS (in order from left to right, as above).

PART NO.	LOAD CAPACITY (KG)	WHEEL WEIGHT (KG)	STUDS	STUD HOLE (MM)	PCD (MM)	FINISH	CENTRE BORE (MM)	OFFSET
550157	2500kg	31kg	8	24mm	275mm	Painted	221mm	156mm
550059	2500kg	31kg	8	26mm	275mm	Cera Chrome	221mm	151mm
550446	2860kg	33kg	8	26mm	275mm	Chrome	221mm	151mm
550155-OGREEN	2500kg	32.2kg	10	24mm	225mm	Painted	176mm	156mm
550159	2725kg	29kg	10	24mm	285mm	Painted	220mm	152mm



**19.5 X 14 MTW STEEL WHEELS** (in order from left to right, as above).

PART NO.	LOAD CAPACITY (KG)	WHEEL WEIGHT (KG)	STUDS	STUD HOLE (MM)	PCD (MM)	FINISH	CENTRE BORE (MM)	OFFSET
550169		42kg	10	26mm	335mm	Painted	281mm	120mm



**22.5 X 7.5 MTW STEEL WHEELS** (in order from left to right, as above).

PART NO.	LOAD CAPACITY (KG)	WHEEL WEIGHT (KG)	STUDS	STUD HOLE (MM)	PCD (MM)	FINISH	CENTRE BORE (MM)	OFFSET
550065	3250kg	39kg	10	24mm	335mm	Painted	281mm	152mm



### 22.5 X 8.25 MTW STEEL WHEELS (in order from left to right, as above).

PART NO.	LOAD CAPACITY (KG)	WHEEL WEIGHT (KG)	STUDS	STUD HOLE (MM)	PCD (MM)	FINISH	CENTRE BORE (MM)	OFFSET
550501	3625	45.5kg	8	32mm J-Budd	285mm	Painted	221mm	165mm
550146-OGREEN	3355	36.5kg	10	24mm	285mm	Painted	220mm	165mm
550825	3535	39kg	10	24mm	335mm	Painted	176mm	145mm



### 22.5 X 9.00 MTW STEEL WHEELS (in order from left to right, as above).

PART NO.	LOAD CAPACITY (KG)	WHEEL WEIGHT (KG)	STUDS	STUD HOLE (MM)	PCD (MM)	FINISH	CENTRE BORE (MM)	OFFSET
550900	4500kg	45	10	24mm	335mm	Painted	281mm	175mm
550500-OGREEN	4760kg	45	10	24mm	285mm	Painted	220mm	175mm
550520-OGREEN	4090kg	55	10	24mm	285mm	Painted	285mm	175mm
550510-OGREEN	4090kg	48	10	24mm	335mm	Painted	284mm	175mm
550500-OGREEN / 550520-OGREEN / 550510-OGREEN ARE HEAVY DUTY WITH 16MM THICK FLANGE FACE								



**22.5 X 11.75 MTW STEEL WHEELS** (in order from left to right, as above).

PART NO.	LOAD CAPACITY (KG)	WHEEL WEIGHT (KG)	STUDS	STUD HOLE (MM)	PCD (MM)	FINISH	CENTRE BORE (MM)	OFFSET
<b>550140</b>	4500kg	42.8	10	24mm	285mm	Painted	221mm	120mm
<b>550144</b>	4500kg	47	10	24mm	335mm	Painted	281mm	120mm
<b>550145-OGREEN</b>	4500kg	48	10	24mm	335mm	Painted	281mm	Zero

## WHEELS

# RIMS



**MTW DEMOUNTABLE/ARTILLERY STEEL RIMS** (in order from left to right, as above).

PART NO.	SIZE	RIM WEIGHT (KG)	RIM EDGE
550060	17.5 x 6.0	19.2kg	
550041	17.5 x 6.75	21kg	
550066	22.5 x 8.25	31kg	
550053	22.5 x 9.00	36kg	15mm To Rim Edge
550063	22.5 x 9.00	43kg	35mm To Rim Edge
550068	22.5 x 11.75	41kg	80mm Offset



**MTW CHROME PLATED STEEL RIMS** (in order from left to right, as above).

PART NO.	SIZE	RIM WEIGHT (KG)
550085PC	22.5 x 8.25	38kg



## WHEELS

# SPACER BANDS



**MTW WHEEL SPACER BANDS** (in order from left to right, as above).

PART NO.	SIZE	TYPE	FINISH
550074A	15 x 3.0	Flat	Silver Painted
550074	15 x 3.375	Flat	Silver Painted
550081	15 x 3.625	Flat	Silver Painted
550086	15 x 4.0	Flat	Silver Painted
550086-OGREEN	15 x 4.0	Corrugated	Silver Painted
550091	20 x 3.625	Flat	Silver Painted
550101	20 x 4.0	Flat	Silver Painted
550106	20 x 4.25	Flat	Silver Painted
550117-OGREEN	20 x 4.5	Corrugated	White Painted
550111	20 x 4.5	Flat	Silver Painted

## WHEELS

# SLEEVE NUTS



SINGLE WHEELS



TWIN WHEELS

PART NO.	THREAD	NUT	THREAD SIZE
550383	Left Hand	Single Wheel (11mm Shaft Length)	M18 x 1.5 (Jap Budd)
550382	Right Hand		
550381	Left Hand	Twin Wheel (28 Shaft Length)	
550380	Right Hand		
550362	Left Hand	Single Wheel (11mm Shaft Length)	M19 x 1.5 (Jap Budd)
550361	Right Hand		
550364	Left Hand	Twin Wheel (26mm Shaft Length)	
550363	Right Hand		
550348	Left Hand	Single Wheel (11mm Shank)	M20 x 1.5 (Jap Budd)
550349	Right Hand		
550346	Left Hand	Twin Wheel (26mm Shaft Length)	M20 x 1.5 (Jap Budd)
550347	Right Hand		
550392	Left Hand	Twin Wheel (31mm Shaft Length)	
550393	Right Hand		
550355PC	Left Hand	Twin Wheel (40mm Shaft Length)	M20 x 1.5 (Jap Budd) with Plastic Cap
550356PC	Right Hand		
550366	Left Hand	Single Wheel (11 Shaft Length)	M20 x 1.5 ISO
550359	Right Hand		
550367	Left Hand	Twin Wheel (30mm Shaft Length)	
550360	Right Hand		
550357	Left Hand	Single Wheel (13mm Shaft Length)	M22 x 1.5 ISO
550350	Right Hand		
550358	Left Hand	Twin Wheel (36 Shaft Length)	
550351	Right Hand		
550354	Left Hand	Single Wheel (13mm Shaft Length )	M24 x 1.5 (Jap Budd)
550353	Right Hand		
550208	Right Hand	Single Wheel (12mm Shaft Length )	7/8 x 11 PSF ISO
550209	Right Hand	Twin Wheel (37mm Shaft Length)	7/8 x 11 PSF ISO
550202	Right Hand	Single Wheel (14mm Shaft Length)	7/8 x 14 UNF ISO
550203	Right Hand	Twin Wheel (37mm Shaft Length)	7/8 x 14 UNF ISO

## WHEELS

# VALVES, EXTENSIONS & O-RINGS



### TYRE VALVES (SCHRADER)

(in order from left to right, as above).

PART NO.	LENGTH (MM)	RIM HOLE (MM)	BENDING ANGLE
10542	93mm	9.7mm	27°
10565	94mm	16mm	147°
10546	95mm	15.9mm	Straight
11543	117mm	9.7mm	27°
10545	127mm	15.9mm	Straight



### VALVE EXTENSIONS

(in order from left to right, as above).

PART NO.	MATERIAL	LENGTH (MM)
10562	Brass	75mm
10543	Brass	84mm



### O-RINGS

PART NO.	MATERIAL
410449	NBR Nitrile N90
CROSS SECTION (IMPERIAL)	CROSS SECTION (METRIC)
.375 x .071 Inches	9.63mm x 1.82mm



### SCHRADER VALVE CORE

PART NO.	DIMENSIONS (IMPERIAL)	DIMENSIONS (METRIC)
10543	0.76 x 0.027 Inches	19.3 x 0.3mm

## WHEELS

# WHEEL NUT INDICATORS



### CHECKLINK

DUAL WHEEL NUT INDICATORS

PART NO.	TO SUIT
551383	30mm
550370	32mm



### DUSTITE LR

WHEEL NUT INDICATORS

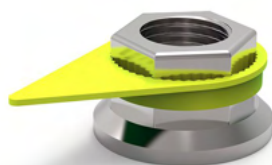
PART NO.	TO SUIT
551380	19mm
551381	21mm



### YELLOW HEXCHEX

WHEEL NUT INDICATORS

PART NO.	TO SUIT
551390	30-38mm
551391	38-50mm



### YELLOW CHECKPOINT

WHEEL NUT INDICATORS

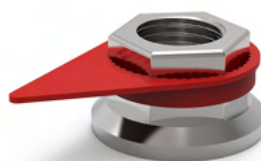
PART NO.	TO SUIT
551379	19mm
551377	21mm
550376	23mm
TA9124	24mm
550326	26mm
550377	27mm
550387	30mm
550368	31mm
550372	32mm
550373	33mm
550375	34mm
551375	35mm
550386	36mm
550374	38mm
550385	41mm
550384	46mm



### DUSTITE LR

WHEEL NUT INDICATORS

PART NO.	TO SUIT
550390	32mm
550389	33mm



### RED CHECKPOINT

WHEEL NUT INDICATORS

PART NO.	TO SUIT
550395	30mm
550388	31mm
551373	32mm
550378	33mm
551382	35mm
550379	41mm



### YELLOW HEXCHEX

WHEEL NUT INDICATORS

PART NO.	TO SUIT
551390	30-38mm
551391	38-50mm

### FUNCTION

The Checkpoint visually indicates wheel nut movement. It will also melt to highlight any overheating issues with the wheel.

### BENEFITS

Improves the safety of nut fittings. Enables quick and easy visual checks and monitoring. Reduces maintenance costs by saving time and money.

### APPLICATION

Mainly for commercial vehicles such as trucks, agricultural vehicles, dangerous goods transporters, etc. It is also used in the industrial sector, and wherever safety critical fasteners can loosen due to heavy vibrations.







